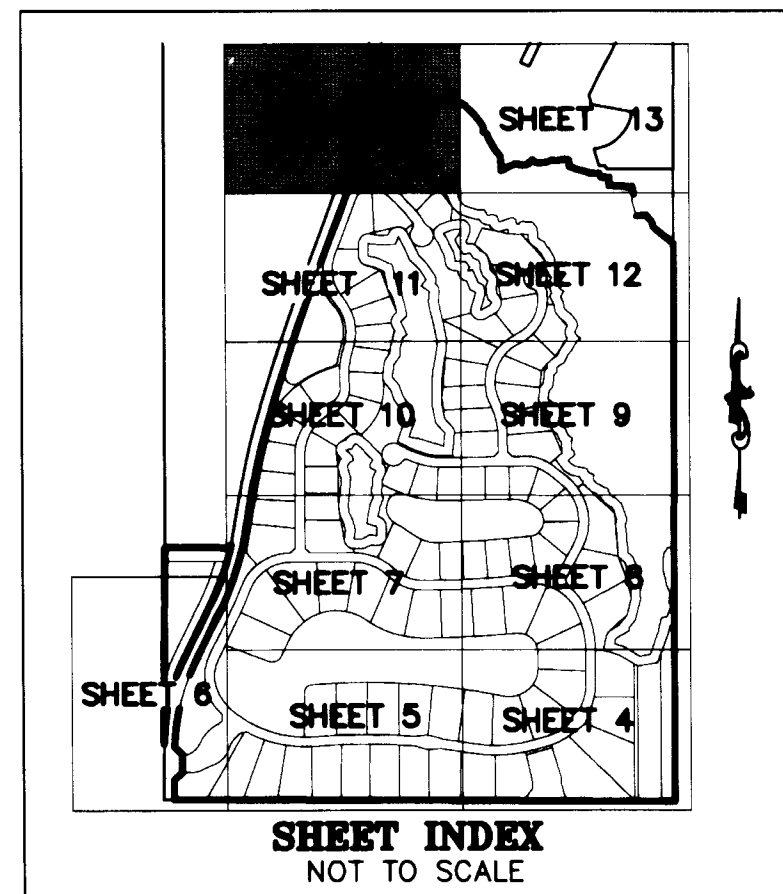


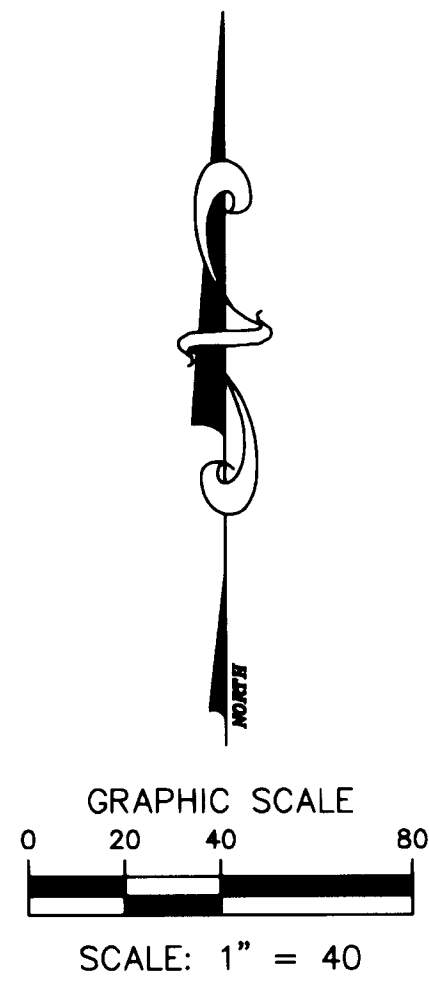
PENNOCK PRESERVE PUD, PHASES 2 & 3

BEING A REPLAT OF "THE OLD PLANTATION PUD", RECORDED IN PLAT BOOK 16 AT PAGE 58, PUBLIC RECORDS OF MARTIN COUNTY, FLORIDA, TOGETHER WITH OTHER LANDS, ALL LYING IN SECTION 28, TOWNSHIP 40 SOUTH, RANGE 42 EAST MARTIN COUNTY, FLORIDA SHEET 14 OF 14

THIS INSTRUMENT PREPARED BY
DAVID P. LINDLEY
OF
CAULFIELD and WHEELER, INC.
SURVEYORS - ENGINEERS - PLANNERS
7900 GLADES ROAD, SUITE 100
BOCA RATON, FLORIDA 33434 - (561)392-1991
CERTIFICATE OF AUTHORIZATION NO. LB3591

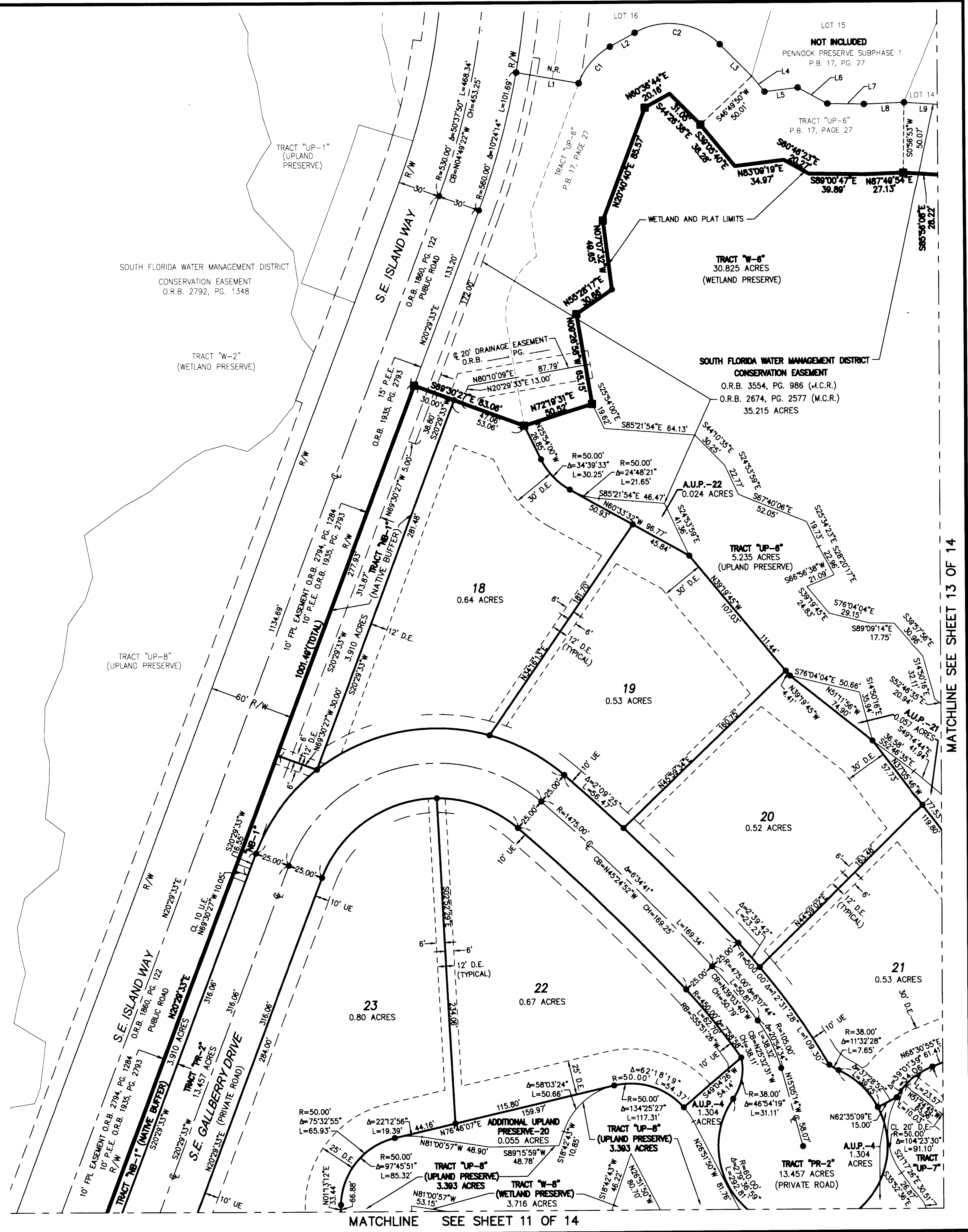


Curve #	Length	Radius	Delta
C1	34.89	50.00	39°58'31"
C2	65.40	50.00	74°56'38"
C3	22.29	50.00	25°32'41"
C4	78.20	50.00	89°36'24"
C5	23.34	50.00	26°44'35"
C6	23.93	50.00	27°25'38"
C7	56.73	50.00	65°00'12"
C8	77.88	50.00	89°14'38"
C9	22.79	50.00	26°06'43"
C10	48.77	50.00	55°52'52"
C11	25.20	50.00	28°52'40"



Line #	Length	Direction
L1	45.05	N79°55'57"W
L2	20.16	S60°36'44"W
L3	32.16	N44°26'38"W
L4	13.04	N39°05'40"W
L5	23.68	S83°09'19"W
L6	23.97	N60°46'23"W
L7	25.94	N89°00'47"W
L8	28.48	S87°49'54"W
L9	25.34	N85°56'08"W
L10	34.22	S81°17'33"W
L11	16.26	N73°09'46"W
L12	43.87	N84°00'53"W
L13	42.09	N65°23'40"W
L14	57.29	N43°25'31"W
L15	28.00	N44°33'51"W
L16	26.12	N40°01'35"W
L17	80.04	N35°30'43"W
L18	8.95	N12°44'22"E
L19	5.82	N60°53'17"W
L20	38.97	N19°24'58"W

NOTES
COORDINATES, BEARINGS AND DISTANCES
COORDINATES SHOWN ARE GRID
DATUM = NAD 83 (90/98 ADJUSTMENT)
ZONE = FLORIDA EAST
LINEAR UNIT = US SURVEY FEET
COORDINATE SYSTEM 1983 STATE PLANE
TRANSVERSE MERCATOR PROJECTION
ALL DISTANCES ARE GROUND UNLESS NOTED OTHERWISE
SCALE FACTOR = 1.0000307
GROUND DISTANCE X SCALE FACTOR = GRID DISTANCE
BEARINGS AS SHOWN HEREON ARE GRID DATUM,
NAD 83 (90/98 ADJUSTMENT), FLORIDA EAST ZONE.



MATCHLINE SEE SHEET 13 OF 14

MATCHLINE SEE SHEET 11 OF 14